



20-750-UFB-1 Universal Feedback Encoder Option Module Firmware Version 1.014

This release note describes major revision 1, minor revision 14 of firmware for the 20-750-UFB-1 Universal Feedback Encoder Option Module.

Introduction

The following information is included in this document:

For information about:	See page:
Enhancements	1
Corrected Anomalies	1
Determining Firmware Revision	2
Firmware Flashing	4
Restrictions	7
Compatible Revisions	7
Rockwell Automation Support	7
Product Satisfaction Return	7

Enhancements

This section describes the enhancements provided in this revision of firmware.

- Enables the 20-750-UFB-1 Option Module to be used in PowerFlex 755 High Power (Frame size 8 or higher) drives.

Corrected Anomalies

There are no anomalies corrected in this revision of firmware.

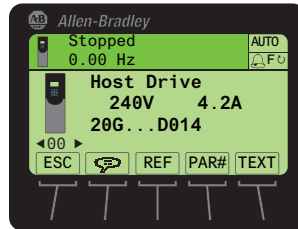
Determining Firmware Revision

This section describes procedures to determine the firmware revision of the 20-750-UFB-1 Universal Feedback Encoder Option Module.

Using the Enhanced PowerFlex 7-Class HIM (20-HIM-A6/-C6S)

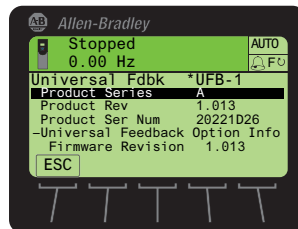
1. Access the Status screen, which is displayed on HIM power up (or press the ESC *soft key* until this screen appears).

Figure 1 Status Screen



2. Use the or key to scroll to the drive Port in which the Option Module is installed (for example, Port 4, 5 or 6).
3. Press the key to display the Option Module's last-viewed folder.
4. Use the or key to scroll to the DIAGNOSTIC folder.
5. Use the or key to select **Device Version**.
6. Press the (Enter) key to display the Option Module information screen, which includes the firmware version (see [Figure 2](#)).

Figure 2 Option Module Information Screen



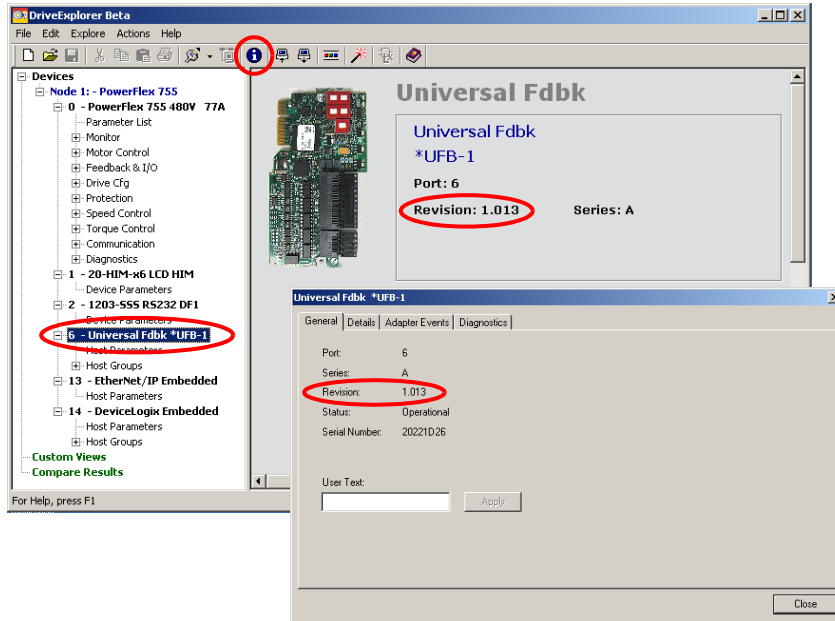
Using DriveExplorer Lite/Full

1. Launch DriveExplorer and go online with the drive in which the Option Module is installed. To connect to the drive, use a 1203-USB or 1203-SSS converter, or an EtherNet/IP network connection.
2. In the DriveExplorer treeview, select “Universal Fdbk *UFB-1” (see [Figure 3](#)) to display the module's properties, including its firmware revision, in the right pane of the DriveExplorer window.



TIP: When using DriveExplorer Lite/Full version 4.xx or earlier, select “Universal Fdbk *UFB-1” in the DriveExplorer treeview and click the information icon to display the module's Properties pop-up window. The module firmware revision is shown in the Revision field.

Figure 3 Information Icon in DriveExplorer Window



Option Module Properties Pop-up Window (DriveExplorer Lite/Full version 4.xx or earlier)

Using DriveExecutive


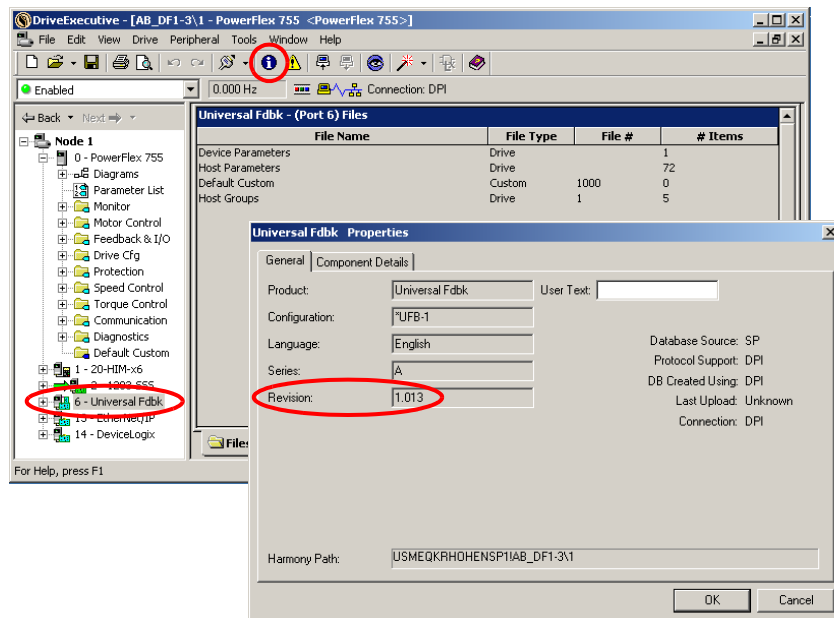
1. Launch DriveExecutive and go online with the drive in which the Option Module is installed. To connect to the drive, use a 1203-USB or 1203-SSS converter, or a network connection.
2. In the DriveExecutive treeview, select “Universal Fdbk” (see Figure 4) and click the information icon  to display the module’s Properties pop-up window. The module firmware revision is shown in the Revision field.

Figure 4 Information Icon in DriveExecutive Window



Option Module Properties Pop-up Window

Firmware Flashing

This section describes how to flash update the Option Module firmware. Flash kits for PowerFlex 750-Series Option Modules are available on the Allen-Bradley Web Updates site at <http://www.ab.com/support/abdrives/webupdate>. Flashing can be performed using a 1203-USB or 1203-SSS converter, or a network connection to the drive. For information about using a converter to connect to the drive, see the converter User Manual. These publications can be viewed or downloaded from the Literature Library web site at <http://literature.rockwellautomation.com>.



ATTENTION: Risk of injury or equipment damage exists. When performing a flash update, verify that the drive has stopped safely before starting a flash update.




ATTENTION: Risk of permanent equipment damage exists. Once a flash update starts, do not remove power from the drive until after the download is completed. If power is removed during a flash update, it is possible that the Option Module can be permanently damaged. An Option Module damaged in this way cannot be repaired.

Important: Flashing the firmware may restore some or all of the Option Module parameters to their default values. Before flashing, you can save your configuration using DriveExplorer or the HIM CopyCat feature.


Installing the Flash Kit

1. Go to the Allen-Bradley Web Updates site at www.ab.com/support/abdrives/webupdate and install the flash kit for the 20-750-UFB-1 Option Module. (This also automatically installs the ControlFLASH software and saves the firmware files for use with HyperTerminal on your computer.)
2. You are now ready to use DriveExplorer, DriveExecutive, ControlFLASH or HyperTerminal to update the Option Module. Refer to the respective method and follow the instructions.

Using DriveExplorer Lite/Full to Flash Update

1. With the Flash Kit installed (see [Installing the Flash Kit](#) above), launch DriveExplorer and go online with the drive in which the Option Module is installed. To connect to the drive, use a 1203-USB or 1203-SSS converter, or an EtherNet/IP network connection.
2. In the DriveExplorer treeview, select “20-750-UFB-1” (see [Figure 3](#)) and click the information icon  to display the module’s Properties dialog box.
3. In the 20-750-UFB-1 Properties dialog box, click the Details tab.
4. To start the flash update, click the **Flash Update...** button. Then select “1.014.01” from the list of available updates and click **Next >**. Follow the remaining screen prompts until the flash update is complete and the new firmware revision is displayed.

Using DriveExecutive to Flash Update

1. With the Flash Kit installed (see [Installing the Flash Kit on page 4](#)), launch DriveExecutive and go online with the drive in which the Option Module is installed. To connect to the drive, use a 1203-USB or 1203-SSS converter, or a network connection.
2. In the DriveExecutive treeview, select “20-750-UFB-1” (see [Figure 4](#)) and click the information icon  to display the module’s Properties dialog box.
3. In the 20-750-UFB-1 Properties dialog box, click the Component Details tab.
4. To start the flash update, click the **Flash Update** button. Then select “20-750-UFB-1” from the list of available devices and click **Next >**.
5. Select “1.014.01” from the list of available updates and click **Next >**. Follow the remaining screen prompts until the flash update is complete and the new firmware revision is displayed.

Using ControlFLASH to Flash Update

1. With the Flash Kit installed (see [Installing the Flash Kit on page 4](#)), launch ControlFLASH by selecting **Start > (All) Programs > Flash Programming Tools > ControlFLASH**.
2. In the ControlFLASH Welcome screen, click **Next >**.
3. Do one of the following. When flashing the Option Module through a:
 - 1203-USB or 1203-SSS converter, choose “20-750-UFB-1 via DPI Comm” from the list, and then click **Next >**.
 - PowerFlex 750-Series network adapter or the embedded EtherNet/IP port on a PowerFlex 755 drive, choose “20-750-UFB-1 via 20-750 Series Comm” from the list, and then click **Next >**.
4. Expand the treeview for the communication path being used, and select the drive icon that represents the drive with the Option Module being updated. Then click OK.
5. With the Multiple Assemblies Found window displayed, select “Port X - Universal Fdbk” from the list and click **OK**.
6. With the Firmware Revision window displayed, select “1.014.01” from the list of available updates and click **Next >**. Follow the remaining screen prompts until the flash update is complete and the new firmware revision is displayed.

Using HyperTerminal to Flash Update

1. With the Flash Kit installed (see [Installing the Flash Kit on page 4](#)), launch HyperTerminal and go online with the drive in which the Option Module is installed. To connect to the drive, use a 1203-USB or 1203-SSS converter. (You cannot flash update with HyperTerminal using a network connection to the drive.)
2. Press the **Enter** key until the main menu ([Figure 5](#)) appears.

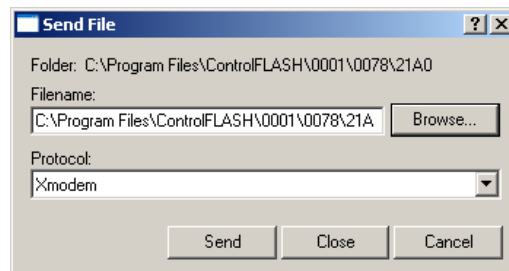
Figure 5 Main Menu

```
Main Menu - Enter Number for Selection
1> Display Setup Parameters
2> Display Event Queue
3> Flash Upgrade
```

3. In the main menu, press **3** to flash upgrade. Then press the number key that corresponds to the “Universal Fdbk” module in the list, and press **Y** (for Yes) to update the flash code. The terminal program will start displaying the letter “C”. This signals the XMODEM protocol that the download may proceed. You then have one minute to start the transfer.
4. Select **Transfer > Send File** to display the Send File screen ([Figure 6](#)).
5. Click **Browse** and navigate to the flash file located in:

C:\Program Files\ControlFLASH\0001\0078\21A0

Figure 6 Send File Screen



6. In the Select File to Send window list, click on the “20-750-UFB-1_01_014_01_App.dpi” file. Then click **Open**. This file name now appears in the Filename box in the Send File screen.
7. In the Protocol box, select “Xmodem.”
8. Click **Send**. A dialog box appears and reports the progress of the update. When it is complete, the message “DPI Peripheral Flash Program Updated. Press any key to continue.” appears.

Important: Keep the drive powered until after the flash is completed.



TIP: To cancel the flash update at any time, press **CTRL-X**.

Restrictions

No restrictions apply to this revision of firmware.

Compatible Revisions

To use this revision of firmware, update your drive software tools.

Drive Software Tools	Firmware Version
DriveExplorer Lite/Full	4.01 (or later)
DriveExecutive	3.01 (or later)
PowerFlex 750-Series Drive	All versions compatible
20-HIM-A6 or 20-HIM-C6S	All versions compatible
RSLinx Classic	2.43 (or later)

Rockwell Automation Support

To assist you, Rockwell Automation provides technical information on the web. At <http://support.rockwellautomation.com>, you can find technical manuals, a knowledge base of Frequently Asked Questions (FAQs), technical and application notes, sample code and links to software service packs, and a MySupport feature you can customize to best use these tools.

Rockwell Automation also provides complimentary phone support for drives, Option Modules, and peripherals. If you experience a problem with the Option Module, please review its documentation. For further help, contact a Customer Support representative:

United States	(1) 262.512.8176 Monday – Friday, 7am – 6pm CST
Outside United States	Please contact your local Rockwell Automation representative for any technical support issues.

For an additional level of technical phone support for installation, configuration, and troubleshooting, we offer TechConnect Support programs. For more information, contact your local distributor or Rockwell Automation representative, or visit <http://support.rockwellautomation.com>.

Product Satisfaction Return

Rockwell Automation tests all products to ensure that they are fully operational when shipped from the manufacturing facility. If your product is not functioning and needs to be returned, do the following:

United States	Contact your distributor. You must provide a Customer Support case number (see phone number above to obtain one) to your distributor to complete the return process.
Outside United States	Please contact your local Rockwell Automation representative for return procedure.

U.S. Allen-Bradley Drives Technical Support - Tel: (1) 262.512.8176, Fax: (1) 262.512.2222, Email: support@drives.ra.rockwell.com, Online: www.ab.com/support/abdrives

www.rockwellautomation.com

Power, Control and Information Solutions Headquarters

Americas: Rockwell Automation, 1201 South Second Street, Milwaukee, WI 53204-2496 USA, Tel: (1) 414.382.2000, Fax: (1) 414.382.4444

Europe/Middle East/Africa: Rockwell Automation, Pegasus Park, De Kleetlaan 12a, 1831 Diegem, Belgium, Tel: (32) 2 663 0600, Fax: (32) 2 663 0640

Asia Pacific: Rockwell Automation, Level 14, Core F, Cyberport 3, 100 Cyberport Road, Hong Kong, Tel: (852) 2887 4788, Fax: (852) 2508 1846